

Columbia Presbyterian Medical Ctr.
New York, New York

1.1 PROTOTYPE

ST12 -Branding Pylon

Prototype represents a fully-sized segment of the sign type. All fabrication techniques should be representative of the techniques to be used for the full scaled version.

Prototype sign segment made from internal aluminum frame with granite cladding and rolled aluminum faces.

Faces are routed, with copy and graphics in push-through white acrylic. Faces should be vertically hinged to allow servicing of sign.

Sign is internally illuminated. Prototype is being created to determine best method of illumination. Cabinet should be made so that three different types of illumination can be demonstrated:

- Neon
- Fluorescent
- LED



Columbia Presbyterian Medical Ctr.
New York, New York

1.2 EXTERIOR SIGNAGE

Shop Drawings

Sign Type 12

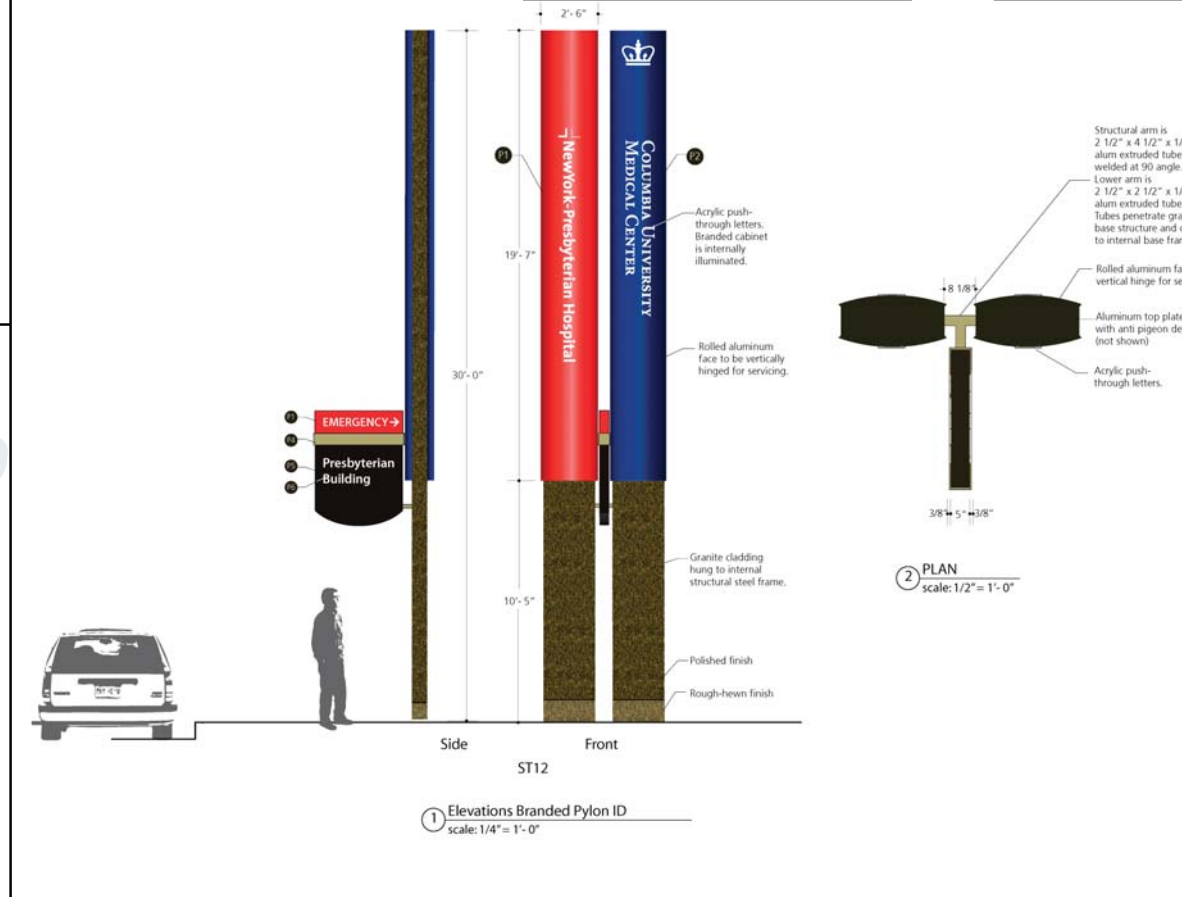
Co-Branded Pylon

Create shop drawing for sign in illustration. Use colors, materials and specifications from this page and previous page.

Include appropriate internal frame, steel and footings required to successfully execute design.

Drawing does not require engineer's seal at this time, but drawings should reflect viable method of producing sign.

Shop drawings to be delivered to designer in electronic EPS or AI format for use in construction documentation of overall project.



*New York - Presbyterian Columbia University
Medical Center, New York, NY*
Prototype and Signage Development



THIS DRAWING REPRESENTS DESIGN INTENT ONLY.

Client/Project Columbia Presbyterian Medical Ctr. Signage and Wayfinding	Project No. 03059
Date 3.30.04	Scale As Noted